

**TECHNICAL SPECIFICATION**

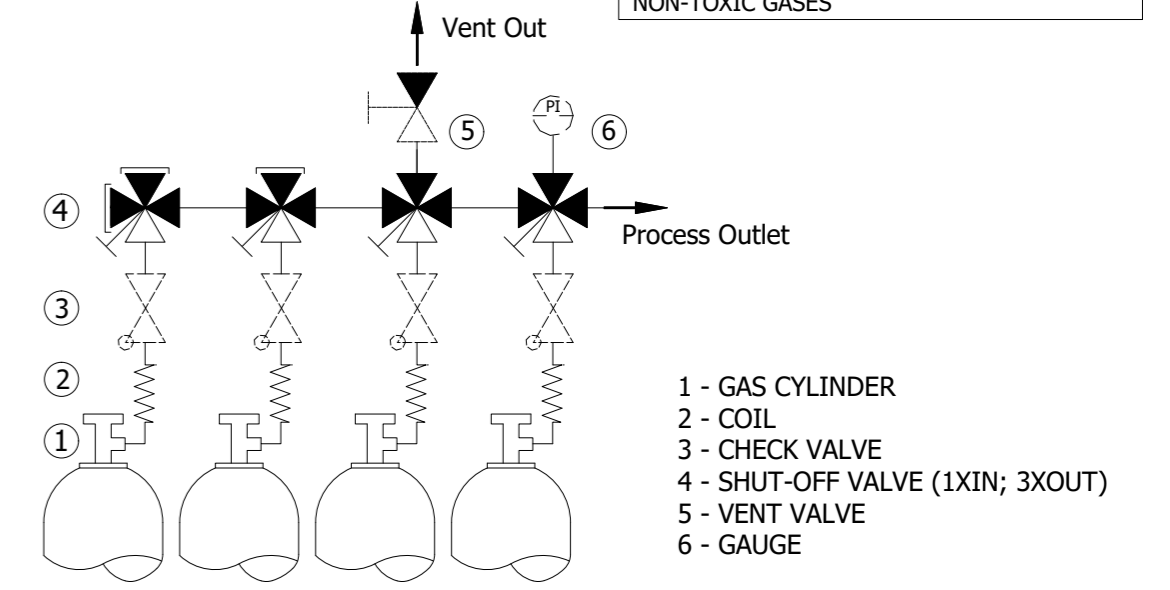
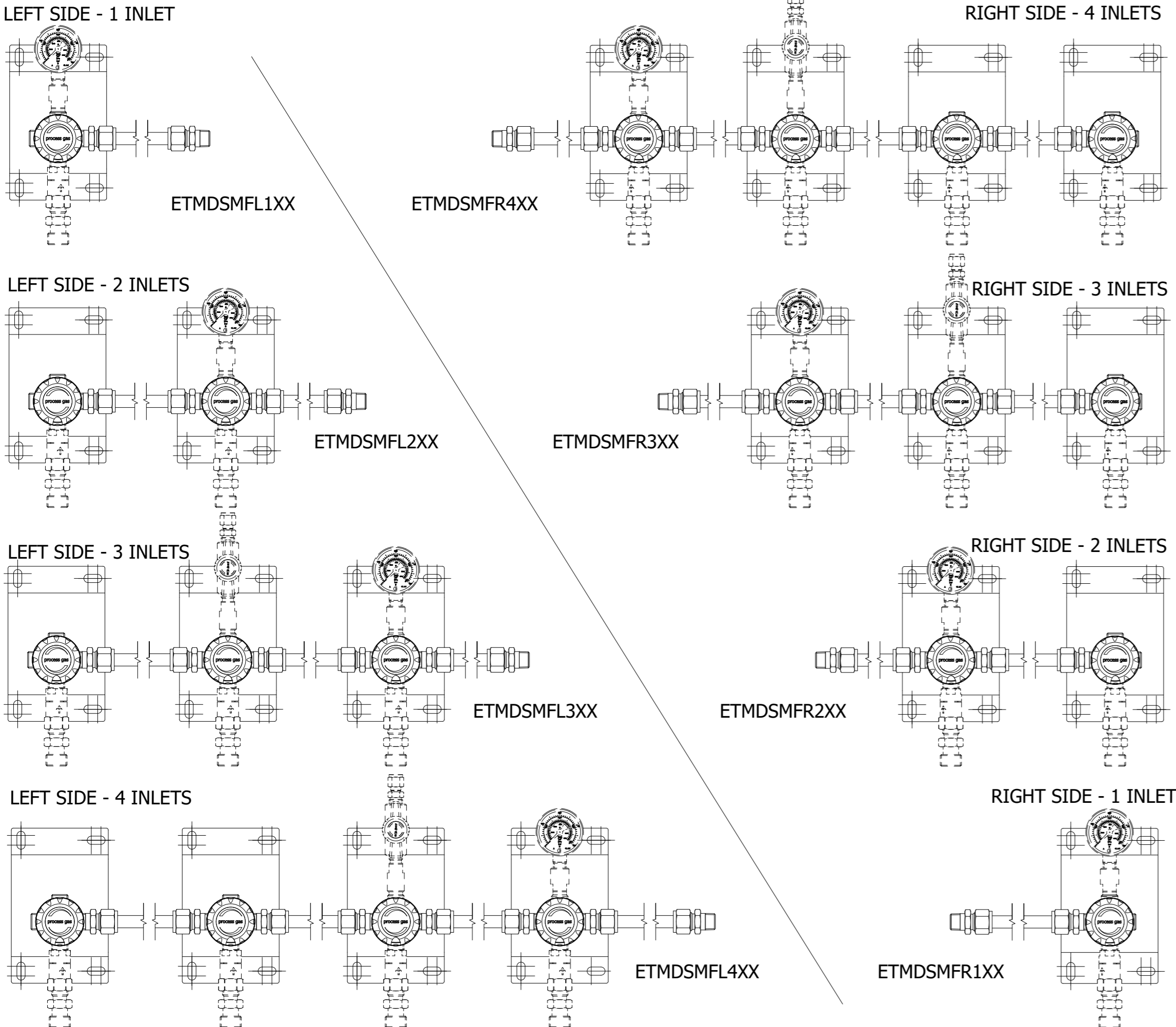
MATERIAL OF GAS WETTED PARTS:  
 VALVE BODY: BRASS (CW614N)  
 VALVE POPPET: BRASS (CW614N)  
 VALVE SEAT: PCTFE  
 TUBE D1/2": STAINLESS STEEL (1.4404)

INLET PRESSURE: MAX.300 BAR

GAS TYPE  
 DEFINED BY PRODUCT LINE AND TYPE  
 (CHECK APPROVED GAS TYPE IN DATASHEET)

TEC LINE:  
 NON-CORROSIVE GASES  
 NON-TOXIC GASES

**Overview of possible extension versions left/right side**



**ORDERING INFORMATION**

**ETMDSM FX X X XX XX XXXX XXXX XXXX**

<b>PORTING ORIENTATION:</b> R - [4 Port] (1 In 3 Out 5 Out 7 Out) L - [4 Port] (1 Out 3 Out 5 In 7 Out)	<b>VENT CONNECTION:</b> SEE LIST OF CONNECTIONS
<b>EXTENSION LEVEL:</b> 1 - 1 INLET 2 - 2 INLETS 3 - 3 INLETS 4 - 4 INLETS	<b>PROCESS INLET CONNECTION:</b> N38F - NPT3/8" FEMALE E2MR - G3/8" MALE EN560 RIGHT W2ML - W21.8X1/4" MALE LEFT W2MR - W21.8X1/4" MALE RIGHT
<b>SPECIALS:</b> 0 - WITHOUT C - CHECK VALVE V - VENT VALVE W - CHECK VALVE + VENT VALVE	<b>LENGTH:</b> L030 - 300 MM L100 - 1000 MM
<b>WORKING PRESSURE:</b> F4 - 60 BAR FX - 200 BAR GX - 300 BAR	<b>PRESSURE INDICATOR:</b> 01 - WITHOUT (PLUGGED) BT - BOURDON TUBE I1 - INDUCTIVE CONTACT I1 R5 - REED CONTACT R5 PT - PRESSURE TRANSMITTER PX - PRESSURE TRANSMITTER EX

**LIST OF CONNECTIONS**

N14F - NPT1/4" FEMALE
M06B - COMPRESSION METRIC 6 MM BRASS
M08B - COMPRESSION METRIC 8 MM BRASS
M10B - COMPRESSION METRIC 10 MM BRASS
M12B - COMPRESSION METRIC 12 MM BRASS
M06S - COMPRESSION METRIC 6 MM SS
M08S - COMPRESSION METRIC 8 MM SS
M10S - COMPRESSION METRIC 10 MM SS
M12S - COMPRESSION METRIC 12 MM SS
IX4B - COMPRESSION IMPERIAL 1/4" BRASS
IX6B - COMPRESSION IMPERIAL 3/8" BRASS
IX8B - COMPRESSION IMPERIAL 1/2" BRASS
IX4S - COMPRESSION IMPERIAL 1/4" SS
IX6S - COMPRESSION IMPERIAL 3/8" SS
IX8S - COMPRESSION IMPERIAL 1/2" SS

**EXAMPLE: ETMDSMFR3VGX01L100N38FN14F**

Polotovar Raw material Dim. of raw material Material Material	Rozměr polotovaru Dim. of raw material Material Material	Povrchová úprava Surface finish Starý výkres Old drawing	Hmotnost Weight List / Počet listů Sheet / Number of sheets 1/2
Komentář Notice Datum vypracování Creation date Vyrobeno Created Inspected Schválil Approved Identifikační Item Class	Opracování / Machining Ra Měřítko / Scale 2:5	Kritický rozměr zřazen Critical dimension marked Netoz. rozměry / Dim. without tol. ISO 2768 m,K KR -0,1 -0,3 +0,3 +0,1	<b>EXTENSION TEC-LINE MID FLOW</b> <b>EXT TEC 100Q DS M 4PORTF 1IN 3OUT</b> 